



税関
JAPAN CUSTOMS

Electronic Declaration Gates are available in 6 airports in Japan.

Narita Airport(Terminal 1, 2 and 3), Haneda Airport(Terminal 3),
Kansai International Airport(Terminal 1 North Wing and 2),
Chubu Centrair International Airport(Terminal 1),
Fukuoka Airport and New Chitose Airport

ICAO and IATA recommend electronic declaration in order to mitigate human-to-human contact as one of preventive measures against COVID-19

***All passengers with IC passports are able to use Electronic Declaration Gates.**

Beforehand! Simple declaration with app on the smartphone



You can create your "Declaration of Personal Effects and Unaccompanied Articles", after downloading the "Customs Declaration Application" on a smartphone and entering your data according to its guidance. Your QR is created in the end.



Speedy passing of the gate at the customs inspection area!



All you need is your IC passport and QR

You can submit your "Declaration of Personal Effects and Unaccompanied Articles" by putting your IC passport and your QR created by app on the respective readers of the electronic declaration terminal at the customs inspection area in the airports. Your face photos are taken during the process for facial recognition when passing through the Gate.

Pass through the gate with facial recognition

After the procedure at the electronic declaration terminal is complete, you can pass through the gate smoothly.

- * Inspection by customs officers may be required.
- * The photo taken for facial recognition is deleted immediately after passing through the Gate.
- * If you need to declare personal effects or unaccompanied articles exceeding duty-free allowance, you will be guided to the inspection table with customs officers.

If you have any questions, please ask customs officers in the airport.

Japan Customs official character "Custom-kun"



How to use the Electronic Declaration Gate



1 With downloading the customs declaration application in advance, you may complete customs entry procedures smoothly.



2 With inputting the data according to the guidance of the app, you may create your QR.



3 With preparing your QR and IC passport, you may go to the electronic declaration terminal at the customs inspection area of the airport.



4 You may just put your QR and the photo page of your IC passport on the respective readers of the electronic declaration terminal.



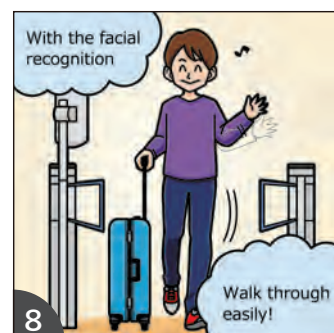
5 The camera on the terminal takes your face photo during the process at the electronic declaration terminal.



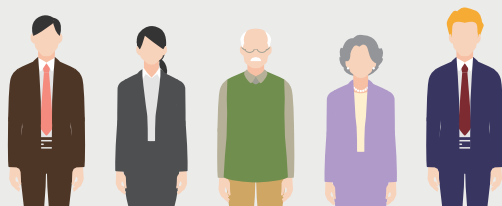
6 It is recommended to go through the procedures while waiting at the baggage claim.



7 After picking up check-in baggage, you may walk to the Gate without waiting.

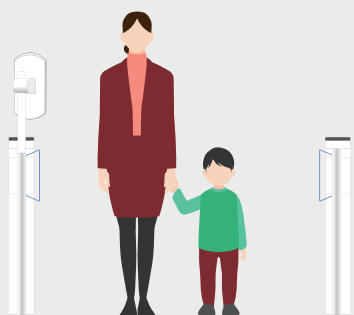


8 You can pass through the Gate smoothly with facial recognition.

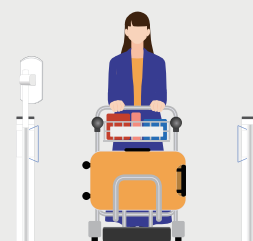


The procedures are required for each person.

Small children* can pass through the Gate with family.



*Only children shorter than 100 cm in height



You can pass through the Gate with carts.
A wheelchair-user can pass through on the wheelchair.



Your face photos are taken during the process at the electronic declaration terminal for facial recognition when passing through the Gate. Please take off any items covering your face.



税関
JAPAN CUSTOMS

Japan Customs Website <http://www.customs.go.jp/>

Part of the international tourist tax revenue is used for the electronic declaration gate.

